

AUTOMATED TOOL MANAGEMENT SOLUTIONS



- **total stores control**
- **full manufacturing support**
- **analysis reporting**
- **system integration**
- **full purchasing capability**



Software





Kennametal Automated Tool Management Solutions (KATMS) Software

provides comprehensive tool and metalcutting supply management for the manufacturing enterprise. The software supports purchasing, automated replenishment, crib management, kitting, and tool assembly management, as well as graphics and setup sheets for presetting. It provides a complete tool technology module that can be customized to hold tool data, tool application data, and workpiece material data for your standard metalcutting operations.

SEARCHING AND SELECTION

In choosing the correct tool, assembly or kit for a task, the user may need to approach the problem in many ways.

KATMS provides the user with the most comprehensive means from which to start the selection or search process.

The process may be by:

- number
- partial number
- supplier's number
- alternative number
- graphical tree search
- family search
- customized geometric search
(used with up to 25 fields for each tool)

Selection by technology is available both as part of KATMS and by built-in links to 'TOOL' technology and supplier electronic catalogs.

PURCHASING

The purchasing module of the KATMS inventory control system enables internal requisitions to be raised and passed electronically to a business system. Alternatively, KATMS can manage the whole purchasing process.

KATMS supports:

- automatic
- manual
- scheduled
- blanket
- re-work orders

Orders can be output directly from the system by paper, fax, E-mail, or EDI.

Goods receiving and returning goods to suppliers is also included, as is purchase history and analysis.

The inventory control and purchasing module reduces stock and the length (time) of the supply chain to the absolute minimum for optimized control.

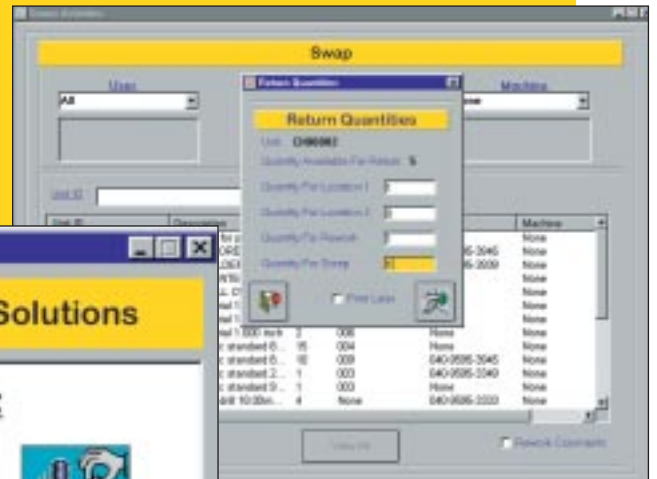
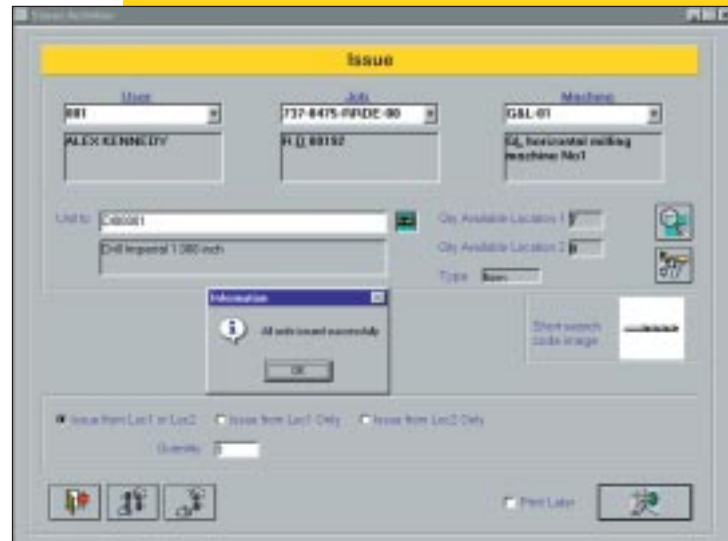


TOOL STORES ACTIVITIES

The tasks associated with the tool stores are more extensive and detailed than in a normal stores environment

The KATMS Tool Stores module:

- supports issue, return, swap, send to re-work (internally or externally), and scrap
- tracks the location of items to machines, jobs, and users at all times, for total visibility and analysis
- manages the building and dismantling of assemblies and enables their tracking and control both as assemblies and within kits
- controls the receiving of both new and re-worked tools, and enables incorrect items to be returned to suppliers
- is simple to use with minimum user input



INVENTORY CONTROL

The KATMS differential inventory control model is comprehensive and unique. It enables flexibility and control over what are high value and 'mission critical' tools in a way that is impossible to achieve with a conventional business system. Items in the database are identified in a way that takes into account their characteristics and usage. Even tools out at re-work or re-grind can have an individual factoring built in to take into account waste and scrap.

Item Number	Description	Tool Type	Partly	Short Search Code	Low Cost
00001	001-001-001-001-001				
00002	001-001-001-001-001				
00003	001-001-001-001-001				
00004	001-001-001-001-001				
00005	001-001-001-001-001				
00006	001-001-001-001-001				
00007	001-001-001-001-001				
00008	001-001-001-001-001				
00009	001-001-001-001-001				
00010	001-001-001-001-001				

Item	Description	Part	Supplier	In Stock	In Process	In Use	In Repair
00001	TOOL - TURNER	00001	00001	1	0	0	0
00002	COUPLER	00002	00002	11	0	0	0
00003	HARDWARE - 1000	00003	00003	20	0	0	0
00004	HARDWARE - 1000	00004	00004	20	0	0	0
00005	HARDWARE - 1000	00005	00005	100	0	0	0
00006	HARDWARE - 1000	00006	00006	20	0	0	0
00007	HARDWARE - 1000	00007	00007	21	0	0	0
00008	HARDWARE - 1000	00008	00008	20	0	0	0
00009	HARDWARE - 1000	00009	00009	1	0	0	0
00010	HARDWARE - 1000	00010	00010	1	0	0	0

ANALYSIS REPORTING

KATMS comes with a comprehensive suite of standard reports to drive down costs and improve efficiency.

Management information is easily generated, providing the tools to help analyze your activities and accurate costing information (usage by machine and/or job and/or user).

A SQL inquiry interface is provided to permit users to query the database and save the results to a file, or directly into a spreadsheet format, for further analysis and presentation.

Management Reports

Reports:

- Cost Centre
- Assemblies to Build
- Total Inventory
- Goods received

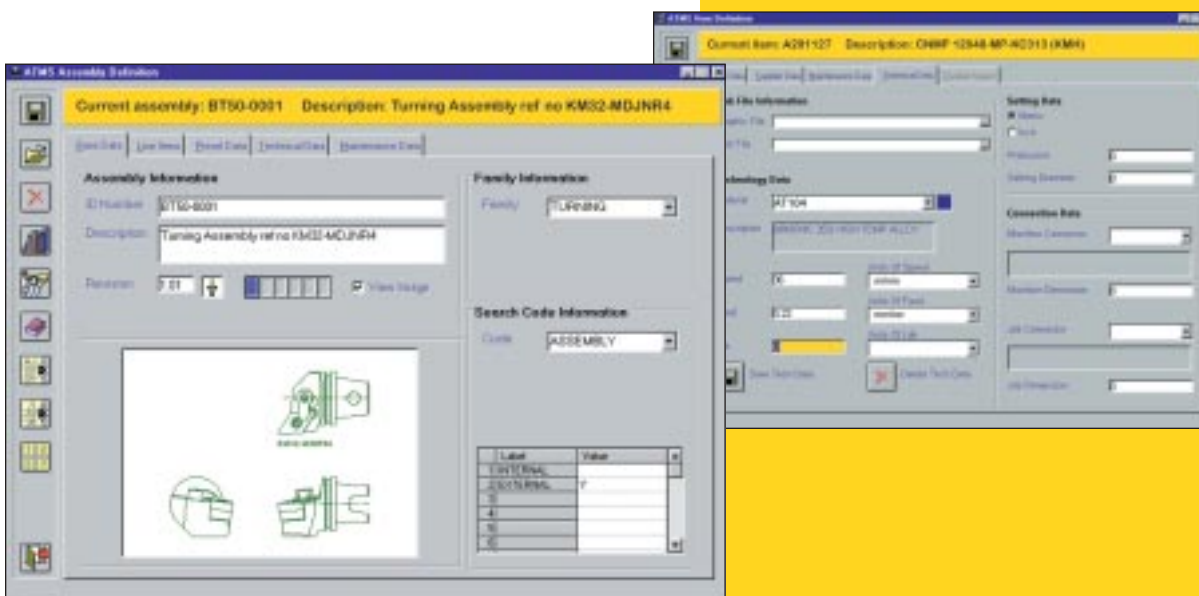
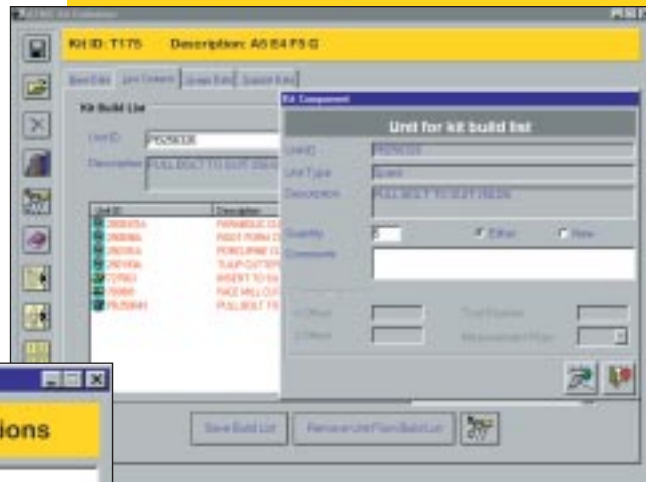
Reports displayed:

- Scrap Report: Scrap Date, Start at, Finish at, Order By
- Returns Report: Return Date, Start at
- Overstocked Report: Permanent Issue, Durable, Less Durable, Consumable

ASSEMBLIES AND KITTING

KATMS supports the management of assemblies and kitting.

Assemblies can be defined including items, technology data, presetting information, and graphics. Once defined within the system, assemblies and items can be built into kits of tools. Kits and assemblies can be tracked and controlled at all times.



APPLICATIONS



KATMS software can support both simple tool crib operations as well as the mixed and more complex tool management needs of a large or dispersed manufacturing enterprise. It's scalable to grow with the needs of your manufacturing enterprise. It's extendable to meet the future needs of your organization. As new machine arrangements are added and differing tool storage methodologies are implemented, KATMS software will assure the availability of tools, metalcutting supplies, and tool assemblies.

Use KATMS software to establish control and to manage metalcutting supplies, production tooling, and tool assemblies in your manufacturing enterprise. Establish a world-class internal supply chain from the receiving dock, through storage, and finally to the cutting edge.



KATMS software is integral to the Kennametal TOOLBOSS™ system. Much more than a vending unit, TOOLBOSS™ is a secure, electronically locked tool storage cabinet that can establish 24-hour tool control over high value items. It issues tools, documents tool returns, accommodates tools for rework, tracks tools, supports EDI ordering, and provides for multi-vendor security.



BENEFITS



Issue



Return



Swap

inventory management and tool control

With KATMS, you can implement tracking, establish an audit trail and gain instant accountability for metalcutting supplies. The results can include a 50% reduction of on-hand inventory within six months, a 30% reduction in tool cost, and can contribute to at least a 6% year-on-year continuous improvement in metalcutting operations.



Dismantle



Build



Kits



Assemblies

kitting and tool assembly management

KATMS software supports tool kitting and tool assembly management, and can interface with industry standard presetters to establish benefits that go above and beyond simple inventory control. With KATMS software, you can implement tool assembly management. Sustainable machine setup time reduction up to 66% can be achieved with the tool assembly management capabilities of KATMS software.

KATMS software's tool assembly management functions can be used for simple tool assembly management with stand-alone machines or within multiple cells. In advanced applications, KATMS software is integrated with the machine control, presetters, tool identification system, and production control systems to enable reactive and predictive tool assembly management.

budget control and cost allocation

Improve your management of metalcutting supplies and improve your ability to control, allocate, and reduce costs. KATMS cost center and budget code references enable you to keep close watch on expenses versus plan and facilitate important calculations such as true cost-per-part. Its purchasing module provides comprehensive support for purchase orders, blanket orders, schedule agreements, and rework orders.



New Rework Order



Send to Rework



Return from Rework

rework float control

KATMS software's powerful rework tracking establishes accountability and control over rework inventory that is "floating" among your rework suppliers. Use KATMS to manage-down the excess dollars tied up in rework inventory and gain full use of the tool lives available.



Features:

- comprehensive purchasing support
- extensive tool technology module
- automated replenishment
- electronic order entry
- inventory management and tracking
- kitting support
- standard customized reporting
- broad rework control
- tool assembly management
- inclusive presetter support
- compatible with shop floor networking and EDI
- scalable and expandable to enterprise tool management

Benefits:

- reduce on-hand inventory up to 50% in six months
- slash tool consumption up to 30%
- eliminate downtime from stock-outs
- achieve up to 66% set up time reduction with tool kitting and tool assembly management
- reduce acquisition costs up to 90% with EDI, electronic order entry, and E-Commerce



Kennametal.
The Metalcutting Authority.

800/446-7738 or www.kennametal.com