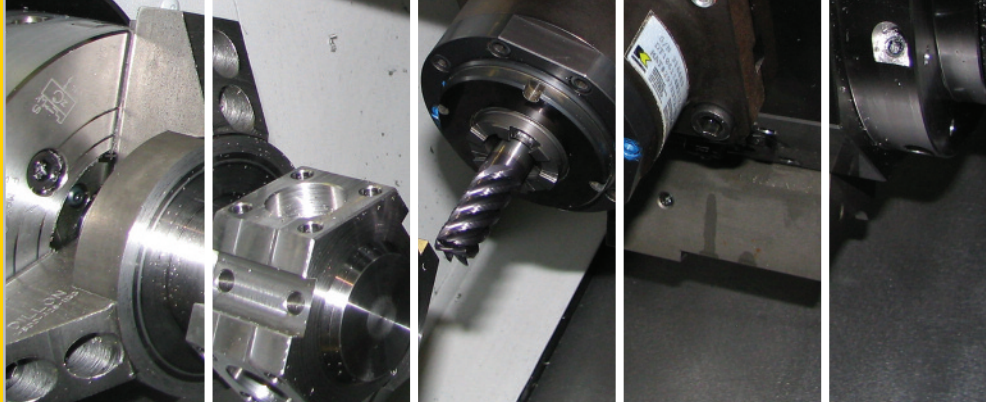


Engineering Your
Competitive Edge
IN TOOLHOLDING



Kennametal Provides Proven KM™ Quick-Change Solutions for Mori Seiki NL Series Lathes

Get the quickest
and most accurate
tooling changes
in the industry!



*...engineered specifically to optimize
the performance of your Mori Seiki lathe —
no matter how challenging the application!*

- KM interface enables the quickest and most accurate tool changes — unsurpassed in the industry!
- Single and Dual KM turret blocks for your I.D. and O.D. applications!
- High-pressure coolant capability (1500psi)!
- High-precision Driven Tools with KM Quick-Change interface or Standard ER collet spindles!

MORI SEIKI
THE MACHINE TOOL COMPANY

Contact your local Mori Seiki
machine tool dealer:

Kennametal will significantly improve your machine utilization!
Let us prove it.

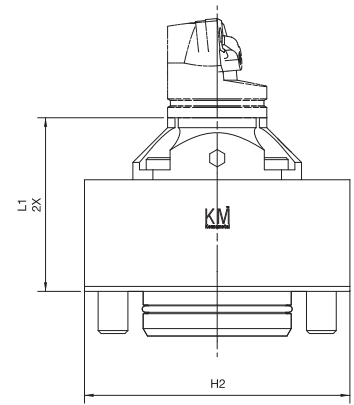
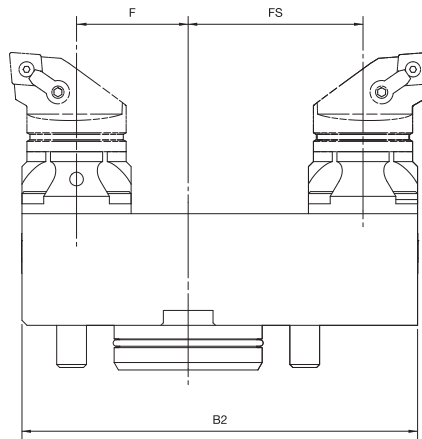
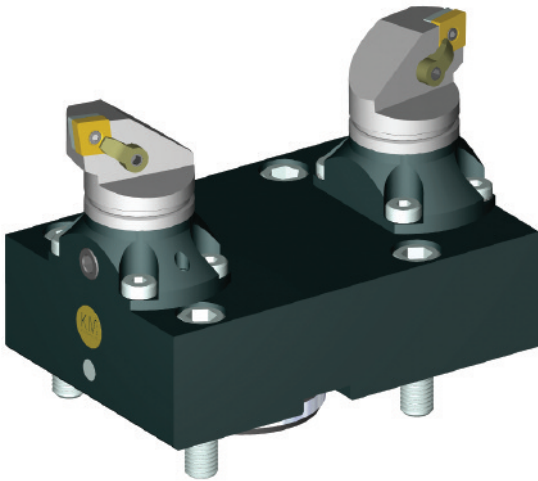
 **KENNAMETAL®**
Engineering Your Competitive Edge

Kennametal KM™ Quick-Change Tooling Solutions

Convert your Mori Seiki NL Series Lathe to Kennametal's KM Quick-Change Tooling and reduce your overall manufacturing costs:

- Reduce CNC lathe tool change times from 5 minutes to 30 seconds.
- Reduce setup time from hours to just minutes.
- KM Quick-Change Tooling is a direct fit to your machine — no modifications required.

Single and Dual KM Turret Blocks — O.D. Units

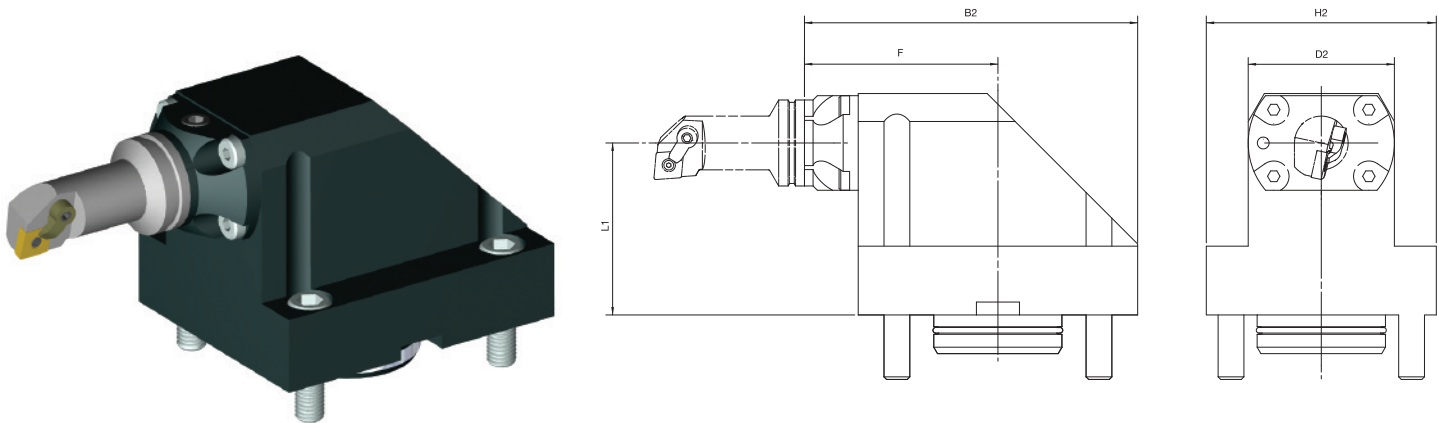


CATALOG NUMBER	ORDER NUMBER	TOOL AXIS	SYSTEM SIZE	L1	F	FS	B2	H2	COOLANT SUPPLY
Mori NL KM40 Single OD	3384010	OD	KM40	2.756	1.772	—	6.280	4.210	INT
Mori NL KM40 Dual OD	3384011	OD	KM40	2.756	1.772	2.775	6.280	4.210	INT
Mori NL KM50 Single OD	3384044	OD	KM50	2.756	1.417	—	6.120	4.210	INT
Mori NL KM50 Dual OD	3384045	OD	KM50	2.756	1.417	2.460	6.120	4.210	INT

Notes: Images shown are for a Dual Turret Block. The Single Turret Block is the same but without the second clamping location. Clamping units are shipped separately and require assembly onto the turret blocks. KM Torque Wrench not included. Order Torque Wrench TW610R for KM40 turret blocks or TW623R for KM50 turret blocks.

Kennametal KM™ Quick-Change Tooling Solutions (cont.)

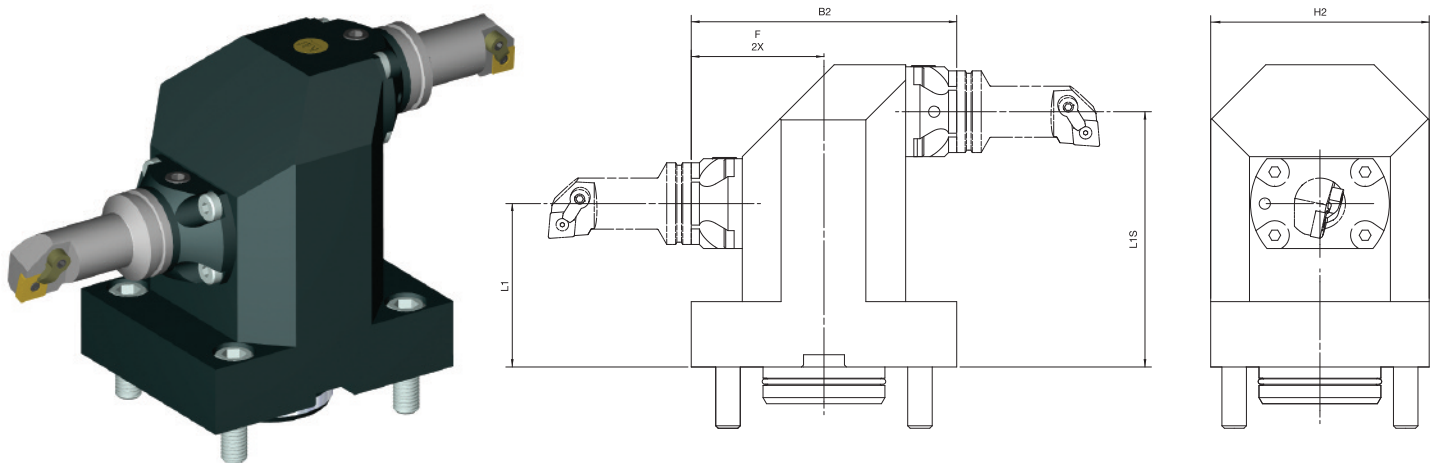
Single KM Turret Blocks — I.D. Units



CATALOG NUMBER	ORDER NUMBER	TOOL AXIS	SYSTEM SIZE	L1	F	H2	B2	D2	COOLANT SUPPLY
Mori NL KM40 Single ID	3384012	ID	KM40	3.150	3.543	4.210	6.300	2.680	INT
Mori NL KM50 Single ID	3384046	ID	KM50	3.150	3.740	4.210	6.300	3.307	INT

Notes: Clamping units are shipped separately and require assembly onto the turret blocks.
KM Torque Wrench not included. Order Torque Wrench TW610R for KM40 turret blocks or TW623R for KM50 turret blocks.

Dual KM Turret Blocks — I.D. Units



CATALOG NUMBER	ORDER NUMBER	TOOL AXIS	SYSTEM SIZE	L1	LS1	F	H2	B2	COOLANT SUPPLY
Mori NL KM40 Dual ID	3384043	ID	KM40	3.150	4.921	2.559	4.210	5.118	INT
Mori NL KM50 Dual ID	3384047	ID	KM50	3.150	4.921	2.559	4.210	5.118	INT

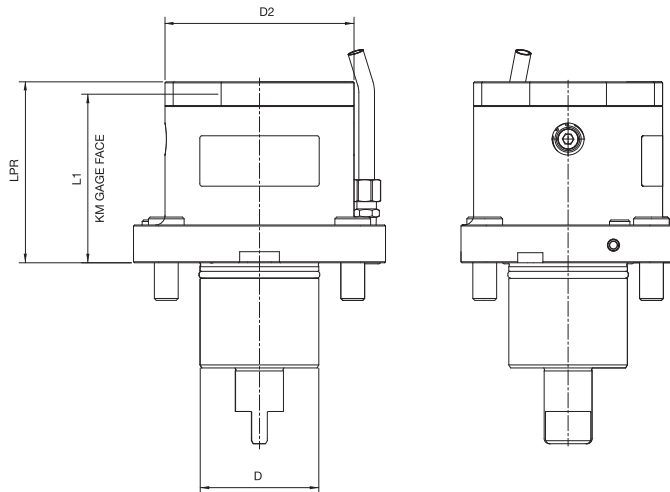
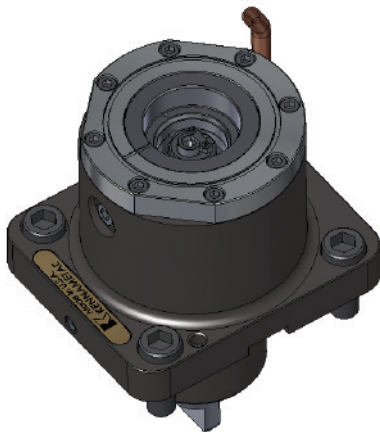
Notes: Clamping units are shipped separately and require assembly onto the turret blocks.
KM Torque Wrench not included. Order Torque Wrench TW610R for KM40 turret blocks or TW623R for KM50 turret blocks.

Kennametal Driven Tooling Solutions

Kennametal's self-contained Driven Units for Mori Seiki NL Series lathes enable multiple part processes such as milling, drilling, and turning on the same part in a single setup.

- Available with either the Kennametal KM interface or standard ER collet style.
- High-precision gears and sealed spindle bearings for smooth, long-lasting operation.
- Increased tool life from the hardened and ground bevel gears.

KM40 Straight Units

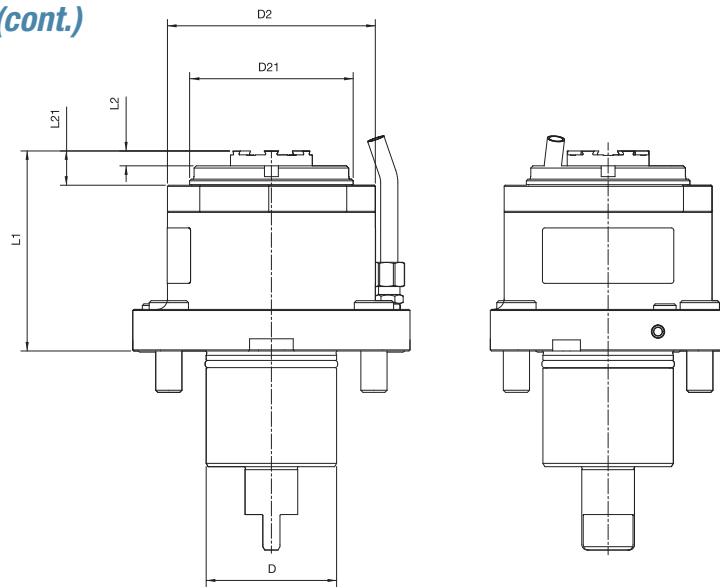
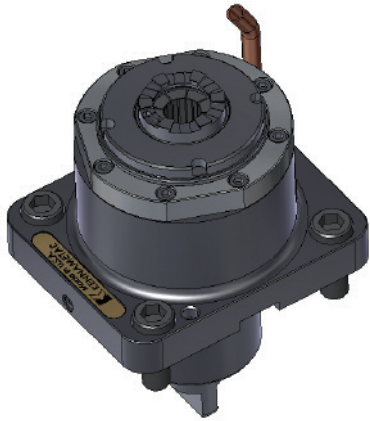


CATALOG NUMBER	ORDER NUMBER	TOOL AXIS	SYSTEM SIZE	L1	LPR	D	D2	COOLANT SUPPLY
DT10610602711	2955528	Straight	KM40	2.080	2.570	2.354	3.940	EXT
DT10610602721	2955529	Straight	KM40	3.100	3.590	2.354	3.940	INT/EXT

Note: KM Torque Wrench not included. Order Torque Wrench TW610R for KM40 units.

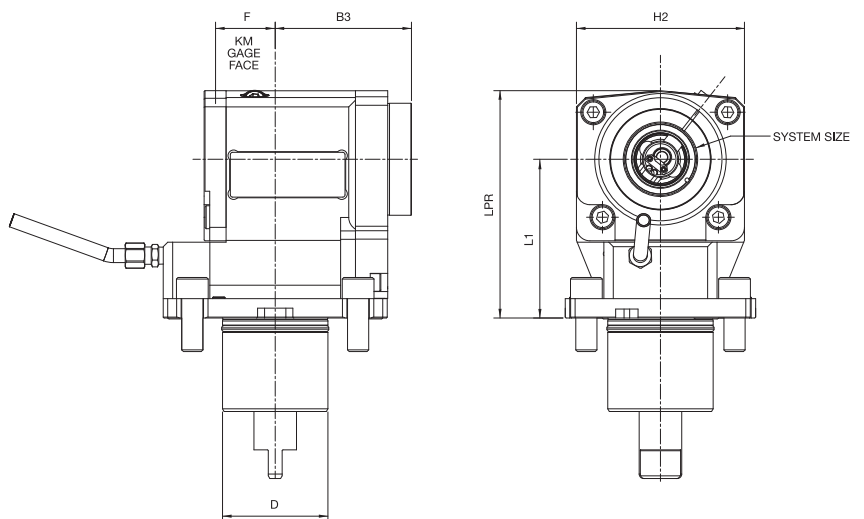
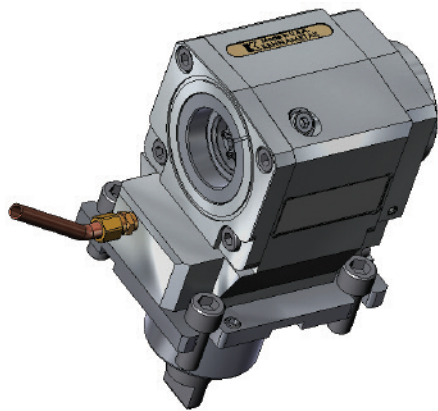
Kennametal Driven Tooling Solutions (cont.)

ER Straight Units



CATALOG NUMBER	ORDER NUMBER	TOOL AXIS	SYSTEM SIZE	L1	L2	L21	D	D2	D21	COOLANT SUPPLY
DT10611402711	3012828	Straight	ER32	2.510	0.067	0.420	2.354	3.940	3.150	EXT
DT10611402721	2978372	Straight	ER32	3.610	0.267	0.610	2.354	3.940	3.150	INT/EXT
DT10611502711	3012829	Straight	ER40	3.150	0.080	0.380	2.354	3.940	3.150	EXT
DT10611502721	3012830	Straight	ER40	4.140	0.300	0.610	2.354	3.940	3.150	INT/EXT

KM40 Right Angle Units

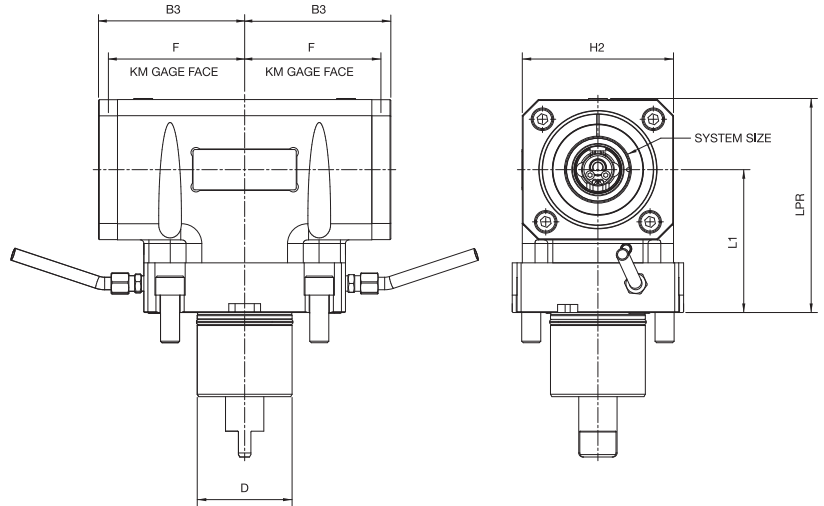
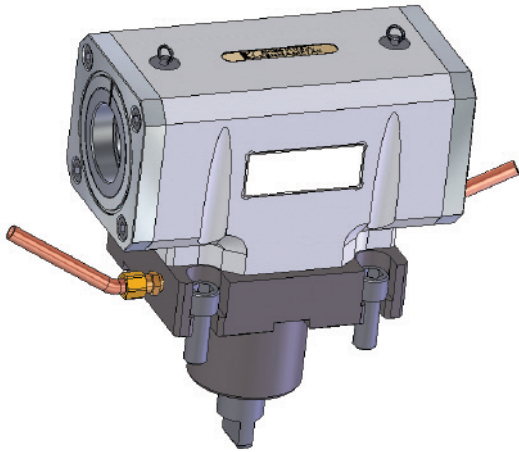


CATALOG NUMBER	ORDER NUMBER	TOOL AXIS	SYSTEM SIZE	L1	LPR	F	B3	H2	D	COOLANT SUPPLY
DT10210602711	2969213	Right Angle	KM40	3.543	5.080	1.102	3.040	2.354	2.362	EXT
DT10210602721	2988851	Right Angle	KM40	3.543	5.080	1.102	3.040	2.354	2.362	INT/EXT

Note: KM Torque Wrench not included. Order Torque Wrench TW610R for KM40 units.

Kennametal Driven Tooling Solutions (cont.)

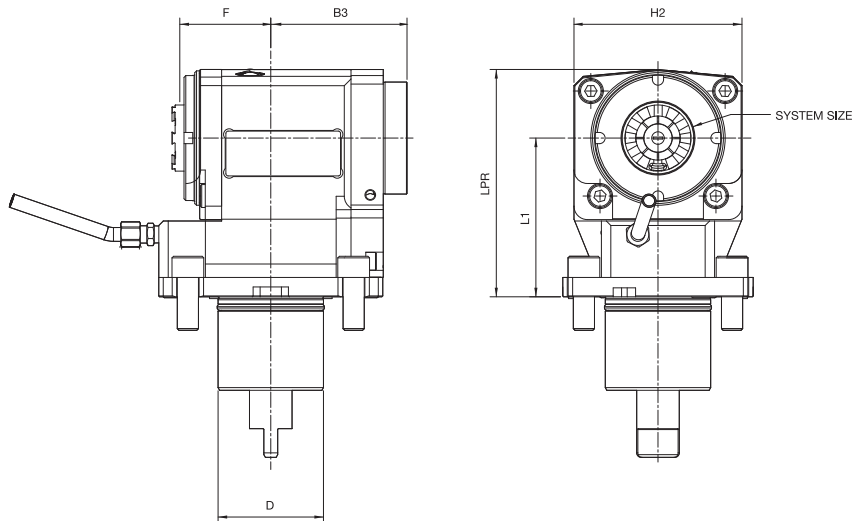
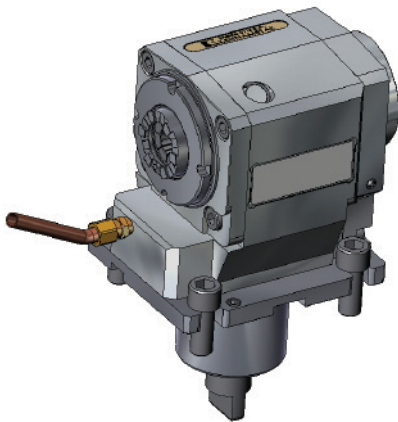
KM40 Dual Angle Units



CATALOG NUMBER	ORDER NUMBER	TOOL AXIS	SYSTEM SIZE	L1	LPR	F	B3	H2	D	COOLANT SUPPLY
DT10510602721	3012835	Dual Right Angle	KM40	3.543	5.275	3.149	3.620	3.750	2.354	INT/EXT

Note: KM Torque Wrench not included. Order Torque Wrench TW610R for KM40 units.

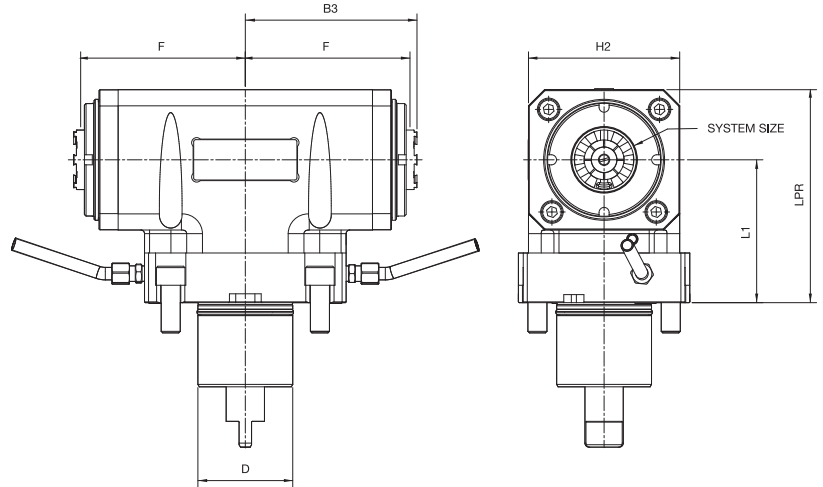
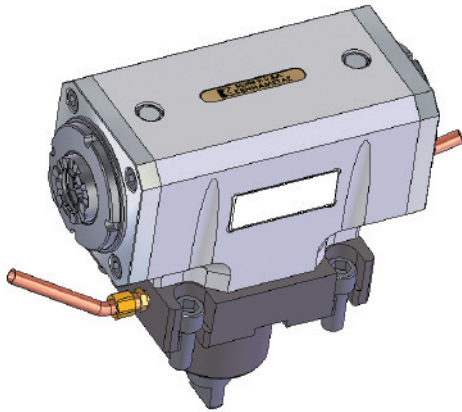
ER Right Angle Units



CATALOG NUMBER	ORDER NUMBER	TOOL AXIS	SYSTEM SIZE	L1	LPR	F	B3	H2	D	COOLANT SUPPLY
DT10211402711	3012833	Right Angle	ER32	3.543	5.075	1.937	3.040	3.750	2.354	EXT
DT10211402721	3012826	Right Angle	ER32	3.543	5.075	1.937	3.040	3.750	2.354	INT/EXT
DT10211502711	3012834	Right Angle	ER40	3.543	5.430	2.362	3.040	3.750	2.354	EXT
DT10211502721	3012827	Right Angle	ER40	3.543	5.430	2.362	3.040	3.750	2.354	INT/EXT

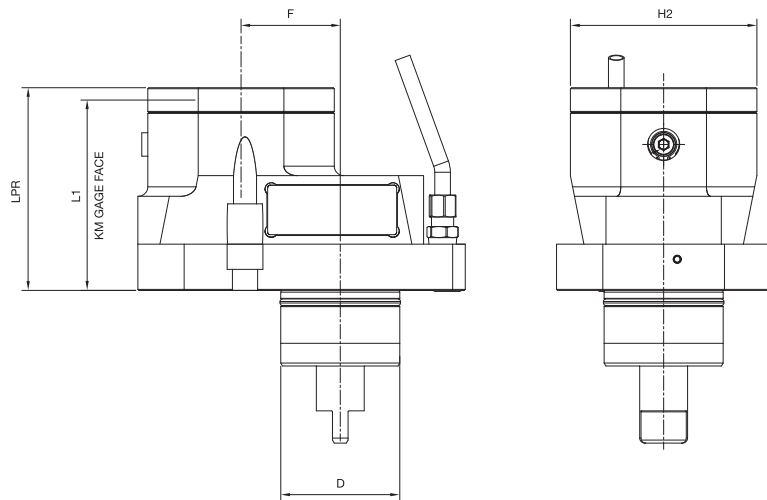
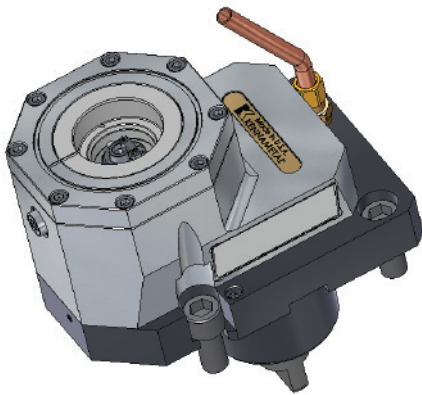
Kennametal Driven Tooling Solutions (cont.)

ER Dual Right Angle Units



CATALOG NUMBER	ORDER NUMBER	TOOL AXIS	SYSTEM SIZE	L1	LPR	F	B3	H2	D	COOLANT SUPPLY
DT10511402721	3012836	Dual Right Angle	ER32	3.543	5.275	3.976	4.240	3.750	2.354	INT/EXT
DT10511502721	3012837	Dual Right Angle	ER40	3.543	5.430	4.055	4.360	3.750	2.354	INT/EXT

KM40 Straight Offset Units

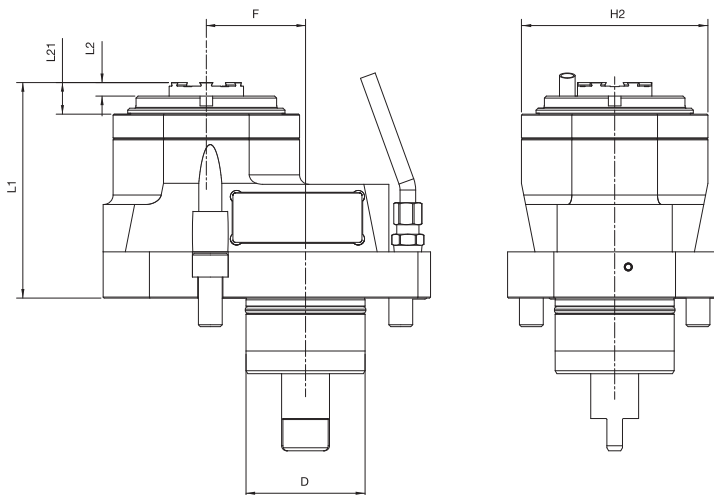
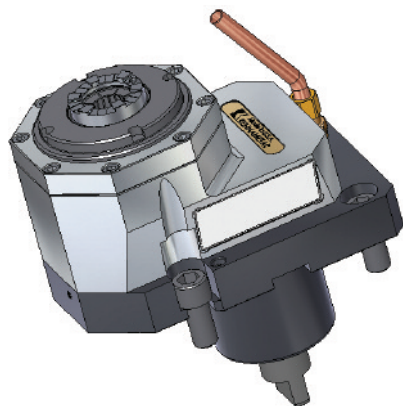


CATALOG NUMBER	ORDER NUMBER	TOOL AXIS	SYSTEM SIZE	L1	LPR	F	D	H2	COOLANT SUPPLY
DT10110602721	3012831	Straight Offset	KM40	3.543	4.020	1.968	2.354	3.700	INT/EXT

Note: KM Torque Wrench not included. Order Torque Wrench TW610R for KM40 units.

Kennametal Driven Tooling Solutions (cont.)

ER Straight Offset Units



CATALOG NUMBER	ORDER NUMBER	TOOL AXIS	SYSTEM SIZE	L1	L2	L21	F	D	H2	COOLANT SUPPLY
DT10111402721	3012832	Straight Offset	ER32	4.260	0.270	0.610	1.968	2.354	3.700	INT/EXT

Have You Tried Kennametal's Newest Holemaking Products?

KenTIP™ Drills

- *Change worn tips without removing the drill from the machine.*
- *More cost-effective than solid carbide drills.*



DRILL-FIX™ DFR 4xD

- *Get the security and dependability of Kennametal DFR indexable drills in a 4xD cutting depth.*
- *Exceptional performance at higher feed rates.*



For more information about how Kennametal can improve your Mori Seiki machine tool performance, please contact your local Kennametal Representative or Mori Seiki machine tool dealer.